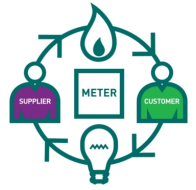


SRSM Project Paper:



Update of WAN Communication Documents

Please find updated versions of the WAN Communications documents attached with this cover note.

We are very grateful for all comments received. We have logged all comments we received that were not marked as confidential, addressed all comments and updated the documents where appropriate.

The updated documents distributed are:

- a statement of requirements;
- potential options for solutions; and
- a high level assessment of those potential communications options that has provided input to the market model assessment currently underway at DECC.

In responding to comments, it is worth re-visiting the primary objectives of these documents which were to gather information, be educational to bring stakeholders to a common level of understanding of WAN Communications.

These documents are not evaluating and selecting a solution for WAN Communications for GB and this has been pointed out to stakeholders through the development process. The output from the assessment exercise has been provided as input to the DECC market model consideration.

The ERA does not have a favoured solution or solutions and has taken on comments on the basis that they will improve the clarity or accuracy of the documentation in the context in which it has been written.

There are a reasonable number of comments that couldn't be taken on board because they are not appropriate in the context of this exercise. This is most frequently for one of three reasons, either that they relate to the conduct or scope of the bigger overall smart metering programme rather than WAN communications specifically, they relate to a misperception on the focus and purpose of these documents or they appear to be trying to address solutions in much more detail than is appropriate for the level of this scope. The documents are intended to be high level and not considering every detail of communications.

Many of these views are directed for consideration of DECC for smart metering as a whole, rather than for the specific update of the documents.

We understand that further responses and portions of responses were made confidentially and clearly cannot assess what impact these might have had on the documentation.

We have captured some common themes in this cover note that are repeated through responses and these are captured below.

Other parties/services:

A number of parties commented that the communications infrastructure deployed for energy smart metering should be used for other purposes (e.g. water metering, telecare). This would have the benefit of reducing overall cost by generating other revenue and improving long term viability.

It will be important to establish which services are compatible and the relationship with smart metering as additional services must contribute to the case and cannot distract from the smart metering initiative. There is a risk here in delay and complication by accommodating the requirements of others rather than defining and implementing an open smart metering platform that could then be used by others. The ERA project to date has engaged a number of other stakeholders (e.g. IMI in water, TAHI) in their smart metering work and it is expected that this will continue under any future delivery programme.

It is important to retain focus on a utility service to ensure that this is delivered robustly as the primary objective.

Requirements cover service and media – options looks at media only

The requirements document deliberately covers the wider scope of the WAN requirements (Service and Media). Discussions may identify that some of these requirements will not need to be solved in the media, or to be irrelevant to the media. This should be considered good. It is better practice to identify requirements, and through consideration find that they do not relate to the media, rather than exclude requirements on the assumption that they do not relate to the media and later find that requirements are missing. Besides this, the WAN service requirements are just that, and they do need to be fulfilled.

Like for Like comparison

The different options cover different 'reaches' of the end to end link and this makes like for like comparison difficult. It is inevitable that this is so as the solutions do have differences of this nature.

The purpose of this exercise is to achieve a good common understanding and the options document does describe the differing architectures, but it would go beyond the scope to explore all combinations in detail.

Access Control

Access Control is an area that attracts a high degree of interest and it is of great importance. Respondents note that this is not likely to be solved within the WAN media solution (this was a clear view in the Workshop).

We agree that Access Control will require further development and if it is established that the media solution is not directly involved, that at least clarifies that the media will not restrict access control. Definition of Access Control is therefore identified as a critical exercise for a programme workstream that takes this forward.

The ERA has provided early views to DECC of what should be involved in Access Control in their published Market Model Definition paper and this needs to be developed into an operational model for smart metering:

<http://www.energy-retail.org.uk/documents/MarketModelDefinitionPaperv1.pdf>

Additional Criteria

A number of respondents suggested additional criteria and/or commented that criteria used in the assessment document were not sourced from a requirement. Given the process undertaken, it was difficult to introduce new criteria at this stage without reviewing our assessment of them. The additional criteria were considered useful in assessment but tended not to be requirements, more considerations of how the requirements might be met.